

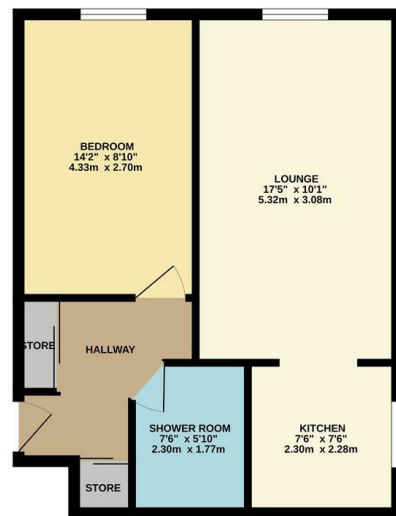


15 BEECHFIELD, ALBERT ROAD WILMSLOW SK9 5HT

* NO CHAIN ** A retirement (Over 60's) apartment located in the heart of Wilmslow. This well presented FIRST FLOOR apartment is fitted with a modern kitchen and shower room with recently decorated and neutral décor and recently fitted carpets. There is a lift to all floors, an intercom entry system, House Manager and a 24 hour emergency pull cord system within the apartments. The communal hallway leads to private accommodation which comprises: entrance hallway with two large mirror fronted storage cupboards. Access to the Lounge/Dining Room, with further access to a fitted kitchen with space for appliances and a window to the side aspect creating extra natural light and as well as ventilation. The double bedroom has fitted wardrobes. There is a modern shower room. Outside there are well maintained communal gardens. Parking subject to availability. Beechfield is linked via a glass atrium to its sister building Lynwood and the combined developments have two communal lounges and a range of organized activities. There is a guest room available for relatives to stay for a small charge, on site laundry and a house manager on site.



GROUND FLOOR



Measurements are approximate. Not to scale. Illustrative purposes only. Made with ARCHICAD 2020.



- Over 60s development
- No chain
- Recently decorated / New carpets
- Kitchen with Window
- Bedroom with fitted furniture
- Lift to all floors
- Communal living room
- Resident car park

Energy Efficiency Rating		Environmental Impact (CO ₂) Rating			
Very energy efficient - lower running costs	Current	Potential	Very environmentally friendly - lower CO ₂ emissions	Current	Potential
(92 plus) A			(92 plus) A		
(81-91) B			(81-91) B		
(69-80) C			(69-80) C		
(55-68) D			(55-68) D		
(39-54) E			(39-54) E		
(21-38) F			(21-38) F		
(1-20) G			(1-20) G		
Not energy efficient - higher running costs			Not environmentally friendly - higher CO ₂ emissions		
England & Wales	EU Directive 2002/91/EC	68	England & Wales	EU Directive 2002/91/EC	69